

# TECHNICAL FILE

**PRODUCT RANGE:** KING

**CODE:** KING-CMDBA-00 , KING-BCMDBA-00

**DESCRIPTION:** COMMODE CHAIR W/BACKREST AND ARMRESTS KING , BLACK  
COMMODE CHAIR W/BACKREST AND ARMRESTS KING

## PRODUCT FEATURES:

The Commode Chair with Backrest and Armrests KING allows the user to achieve greater autonomy and independence while using the toilet and the shower, reducing muscle fatigue due to standing position as well as slip and injuries risks. The commode chair can be set up in three different configurations: placed directly on the toilet bowl, used in combination with the bucket as a commode and used in combination with the soft cushion as a shower seat.

The legs are height adjustable so that the user can choose the specific length according to their needs. The legs can also be configured so that the front ones are shorter than the rear ones. This promotes maintaining a healthier posture and reduce bending of knees and hips. The seat is provided with anti-slip caps and given its flexibility, it maintains stability also on bumpy floors, like those typical of many shower trays. The backrest and armrests complete the product and make it safer and more comfortable. The commode can be easily moved thanks to its reduced weight.

## MECHANICAL PERFORMANCE:

Max user weight 150 kg; 330 lb.

**CERTIFICATIONS:** CE Declaration of Conformity of the European Regulation for Medical Device (MDR) 2017/745.

## APPLICABLE NORMS:

EN ISO 14971:2019+A11:2021, EN ISO 13485:2016+A11:2021, ISO 17966:2016, EN ISO 14001:201, PN-EN 1041:2010 + A1 2013, EN ISO 21856:2022.

## MAINTENANCE:

Periodically check that fixing fittings conform to initial mounting.  
Clean with water and non-aggressive detergent.  
Do not use abrasive or corrosive products.

## PRODUCT PACKAGING:

Box dimensions : 563x420x152

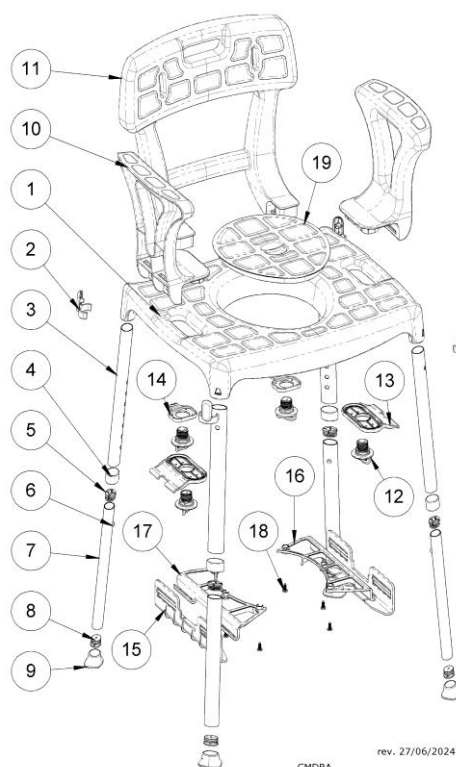
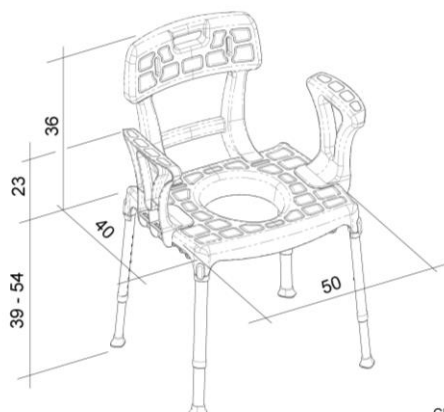
Gross Weight: 5.42

Net Weight: 4.64

Shipping carton dimensions : 796x596x427

PACKAGING COMPONENTS	Q.TY	CODE
Box	1	RB-KINGCMDBA-KN
Shipping Carton	1/5	MB5-KINGSC1BA-00
User Manual	1	UM-KINGCMDBA-KN
Box Label	1	BL-BKINGCMDBA-KN
Shipping Carton Label	1/5	SL-BKINGCMDBA-KN
Product Label	1	PL-ASKINGCMDBA-KN

PRODUCT COMPONENTS	Q.TY	MATERIAL	REF.
Seat	1	Polypropylene	1
Plugs for legs	4	PA6	2
External Tube	4	Anodized Aluminium	3
Ring Connector	4	Polyethylene	4
Central Caps	4	Polypropylene	5
Spring	4	Stainless Steel	6
Internal Tube	4	Anodized Aluminium	7
Terminal Caps	4	Polypropylene	8
Rubber Caps	4	TPR	9
Armrest	2	Polypropylene	10
Backrest	1	Polypropylene	11
Lower Screw	4	Polypropylene	12
Lower Clamp	2	Polypropylene	13
Clamp Backrest	2	Polypropylene	14
Bucket Support	1	Polypropylene	15
Holder SX	1	Polypropylene	16
Holder DX	1	Polypropylene	17
Screws for Holders	6	Stainless Steel	18
Seat Lid	1	Polypropylene	19



rev. 27/06/2024 11:17:32

Ref. Technical File KING-CMDBA-00, KING-BCMDBA-00 Rev 03 as of 10/2024

The above data cannot be binding. LM Global Design Ltd. reserves itself the right to make technical or aesthetic modifications without notice at any time.